



Shropshire, Telford  
and Wrekin



Integrated  
Care System  
Shropshire, Telford and Wrekin



Shropshire  
Council



Telford & Wrekin  
COUNCIL



Shropshire Safeguarding  
Community Partnership



# Safeguarding Adults Forum September 2025

Karen Littleford  
Safeguarding Adults Lead  
Partners in Care



[partnersincare.org.uk](https://partnersincare.org.uk)

# Safeguarding Adults Forum Dates 2025/2026



## Online – Zoom (9:30am - 12:30pm)

- Wednesday 10th December 2025
- Wednesday 18th March 2026

<https://www.partnersincare.org.uk/networking-events/meetings-forums-events/networking-meeting-for-trainers>



# Agenda

**Safeguarding Adults Team Telford and Wrekin Update** - Duncan Henney (Team Leader/AMHP/BIA Adult Safeguarding) and Amy Richards (Senior, Adult Safeguarding Team, Telford and Wrekin Council)

**Safeguarding Referral Online Portal Update (Telford & Wrekin)** – provided by Neil Hammond (Business Systems Development Specialist, Assurance, Transformation and Financial Management, Telford and Wrekin Council)

**Shropshire Consultation Reminder - Enquiry plan template & Alternative Actions Proforma**  
Karen Littleford (Safeguarding Adults Lead, Partners in Care)

**Learning from Safeguarding Adults Reviews in respect of DoLS** - Julia Bird (DoLS Lead, Telford and Wrekin Council)

**A Different Perspective?** - Karen Littleford (Safeguarding Adults Lead, Partners in Care)

**SARS and DARDR update** – Updates provided by Lisa Gardner (Development Officer, Business Unit, Shropshire Safeguarding Community Partnership) and an update from Lisa Jones (Safeguarding Adults Board Manager, Telford and Wrekin Safeguarding Partnership)

**Resources and Webinars** - Karen Littleford (Safeguarding Adults Lead, Partners in Care)

# Safeguarding Adults in Telford and Wrekin Update



Duncan Henney (Team  
Leader/AMHP/BIA Adult Safeguarding,  
Telford and Wrekin Council)

Amy Richards (Senior, Adult  
Safeguarding Team, Telford and Wrekin  
Council)

# Adult Social Care

Adult Safeguarding Team: Update and refresher for our partners; new developments in SG

## Our Adult Social Care Charter

We will always promote independence

We will listen with empathy and understanding

You will know who to contact and we will always get back to you

Our conversations will be honest and personal to you, we won't just tick boxes

We will respect your decisions, be honest and open

**Safeguarding is  
Everyone's  
Responsibility**

*Working together to enable people to Live Well and Independently  
in Telford and Wrekin*

Protect  
Care and Invest  
to create a  
better borough



Telford & Wrekin  
COUNCIL

# Welcome!

Our aims for today.....

**Who we are  
and what we  
do**

**Team  
structure and  
contacts**

**Provider  
responsibilities  
and available  
support**

**Review key  
updates and  
themes**

# Adult Safeguarding Team Structure

## Operational Manager Role

Operational Manager leads strategic direction for Adult Safeguarding Team

## Team Leader

Oversees daily operations, supports strategic leadership and management of complex safeguarding cases through supervision and strategy meetings; ensure safeguarding policies are implemented.

## Senior Officers

Supports daily operations; supervision of Safeguarding Officers, oversees complex safeguarding cases and Strategy Meetings, provides expert guidance, and ensures multi-agency coordination.

## Safeguarding Officers

Coordinates safeguarding enquiries and plans to protect adults at risk, working with partners to promote safety, rights, and wellbeing; duty system

**FAMILY CONNECT: 01952 385385 (option 3)**

**Tracy Holmes**  
*Operational Manager*

**Duncan Henney**  
*Team Leader*

**Amy Richards**  
*Senior*

**Safeguarding Officers**  
*4 x Social Workers*

**Agency Safeguarding Officers**  
*2 x Temporary*

# Role of the Adult Safeguarding Team

## Purpose

To protect adults with care and support needs from abuse, neglect, and exploitation, ensuring their wellbeing, safety, and rights.

## Key Responsibilities

- **Respond to Concerns:** Act promptly to assess and manage immediate risks.
- **Make Enquiries:** Lead or coordinate safeguarding enquiries under the Care Act 2014.
- **Safeguarding Plans:** Develop person-centred, outcome-focused plans to manage ongoing risks.
- **Information Sharing:** Share relevant data securely and lawfully across agencies.
- **Advocacy & Consent:** Ensure adults are involved in decisions; appoint advocates where needed.
- **Multi-Agency Working:** Collaborate with health, police, housing, and other partners.
- **Training & Support:** Promote safeguarding awareness.

## Guiding Principles

Empowerment | Prevention | Proportionality | Protection | Partnership | Accountability



# The Safeguarding Process

The purpose is to determine what action is needed to respond to concerns and reduce risk for those who are eligible. **The focus should always be on the adult as opposed to the process.**

All practice should be carried out in line with **Making Safeguarding Personal (MSP)**. The adult SG process seeks to respond to concerns in a way that is **person centred, outcomes focussed**.

The key principles that govern Safeguarding procedures are set out in Chapter 14 [Care and support statutory guidance - GOV.UK \(www.gov.uk\)](https://www.gov.uk/government/publications/care-and-support-statutory-guidance)

The key policies that govern Safeguarding Practice in Telford and Wrekin can be found here:

[Policies, procedures and key documents - Telford and Wrekin Safeguarding Partnership \(telfordsafeguardingpartnership.org.uk\)](https://telfordsafeguardingpartnership.org.uk)

# Providers Responsibilities in the Safeguarding Process

- **Reporting & Responding**

- Act promptly on concerns; follow escalation protocols.
- Ensure staff understand their duty to report.

- **‘Cause Other’ Enquiries**

- Lead or support investigations when required.
- Collaborate and document actions clearly.

- **Record-Keeping & Info Sharing**

- Keep accurate, secure records.

- **Training & Supervision**

- Provide regular safeguarding training.
- Support staff with supervision and updates.

# Support available to Providers

- **Safeguarding Team support: beyond Enquiry** – driving service improvement through learning.
- **Learning and Guidance:** supporting safer care (Resources): 7-minute briefings – Safeguarding Adults Board and Safeguarding Team drop in; lunch and learn - Safeguarding Adults Board
- **Peer support networks** – connecting for better safeguarding: Partners in Care, Safeguarding Team drop in; Safeguarding Team Meetings at Care Homes
- **Safeguarding Quality Assurance: Ensuring Accountability and Improvement:** feedback mechanism for providers; role of audit and reviews

# Strategic Context and Priorities

## **Local Priorities:**

- Improve Section 42 timeframes
- Increase conversion rates
- Address CQC feedback issues
- Support co-production
- Respond to exploitation concerns (recent board discussions on pathways)

## **Advocacy**

- Strengthening advocacy access and awareness

## **Organisational Review**

- Reviewing pathways and policies
- Provider feedback via drop-in sessions

# **Safeguarding: key updates and provider collaboration**

- **Opportunities for Co-Production & Feedback**

- Co-production initiatives including service user involvement.

- **New Tools & Resources**

- Adult Portal for online referrals.
- Service User Feedback Form to enhance engagement.

- **Legal & Capacity Safeguards**

- Strengthening use of Lasting Powers of Attorney (LPA) and Mental Capacity Act (MCA).
- Rising demand for mental capacity assessments and specialist legal advice.

- **Multi-Agency Collaboration**

- Reconfiguration of Harm Assessments Unit (HAU) Multi-Agency Hubs

- **Topical Focus Areas**

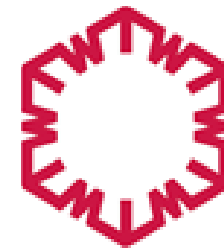
- Modern Slavery – NRM Pathway (Anti-Slavery Awareness Week: 13–19 Oct 2025).
- Exploitation
- Financial Abuse

# Themes from Recent Safeguarding Cases

- **Common Categories of Abuse:**
  - Neglect/Omission
  - Resident-on-Resident Incidents
  - Falls
  - Financial Abuse
- **Unsubstantiated Cases:**
  - More frequent
  - Often due to good evidence of preventative steps taken
- **Large-Scale Investigations:**
  - Very few in recent years
- **Care Provider Concerns:**
  - Frustration with health partners
  - Escalation processes in place
- **Position of Trust Notifications:**
  - Often relate to issues outside of work
  - May affect suitability to work with vulnerable adults



**Update - Pilot Safeguarding Referral Online Portal** – from Neil Hammond (Business Systems Development Specialist, Assurance, Transformation and Financial Management, Telford and Wrekin Council)



Telford & Wrekin  
**C O U N C I L**



Telford & Wrekin  
Co-operative Council

Protect, care and invest  
to create a better borough

# Adult Social Care Portal

The online referral tool for professionals [www.telford.gov.uk/ascportal](http://www.telford.gov.uk/ascportal)



Update from Neil Hammond (Business  
Systems Development Specialist,  
Assurance, Transformation and  
Financial Management, Telford and  
Wrekin Council)



Telford & Wrekin  
Co-operative Council



The Adult Portal will provide the ability for Professionals to complete 'Professional Referral'. This will be a more streamlined process. It does not replace any current 'traditional' methods of contacting Adult Social Care in Telford and Wrekin.

The Adult Social Care Portal is an online platform designed to enhance the way Adult Social Care is accessed. The portal is set to provide comprehensive support and streamline communication for both residents and professionals.

The portal serves as a vital tool for professionals, enabling them to make an electronic professional referral into Adult Social Care. The initial soft launch will focus on the safeguarding professional referral; designed in coproduction with our Adult Safeguarding Team, and consultation with Partners in Care members, to ensure a streamlined and efficient safeguarding process for all involved.

Whilst the portal's safeguarding professional referral does not replace any traditional methods of contacting Adult Social Care in Telford and Wrekin, during the soft launch period, we kindly request that Partners in Care members utilise the portal to complete any adult safeguarding referrals into Adult Social Care. Your participation during this phase is crucial to allow us to thoroughly test the system, identify potential issues, and gather valuable feedback to ensure it works for you before the full launch, planned for the end of September 2025.



We'd appreciate if you could share your thoughts by using the "feedback" functionality within the portal itself. This feedback mechanism will help us to swiftly collate information and action as necessary. For guidance on how to do this, please view the attached Information Sheet.

The live link to access the Adult Social Care Portal is:

<https://www.telford.gov.uk/ascportal>

For further information and a demonstration of the Safeguarding Professional Referral, please see the link below.

<https://youtu.be/AcvrTI0mKaY>

Please note that this recording has two amendments. Firstly, the soft launch date has been changed to today. Secondly, the User Guide has been replaced with the attached Information Sheet (developed in consultation with Partners in Care).

# **Learning from SAR's in respect of DoLS**

Julia Bird (DOLS Lead, Telford  
and Wrekin Council)



# What is a Safeguarding Adult Review (SAR)?

A Safeguarding Adult Review (SAR) is a multi-agency process, mandated by the Care Act 2014, that examines cases where an adult with care and support needs has experienced serious harm or death due to abuse or neglect. The purpose is to learn from these situations and improve future practice, not to apportion blame.

# Case overview

- P is a 30 year old female with a diagnosis of severe learning disabilities, generalised tonic-clonic epilepsy and autism.
- P has lived in her supported living placement since 2013,
- P has access to 1:1 support throughout the day and night (waking support), and 2:1 support when accessing the community,
- P was subject to 30 minute observations throughout the night,
- Assistive technology was in place including audio monitoring, seizure detection alarm (Alert it pulse companion), a bed occupancy sensor.

# In respect of DoLS...

The "acid test" for [Deprivation of Liberty Safeguards \(DoLS\)](#) is a two-part question to determine if a person is deprived of their liberty: 1) Is the person subject to continuous supervision and control? and 2) Is the person free to leave? If both conditions are met, it indicates a deprivation of liberty.

- P met the 'acid test' in that she was under constant supervision and control and that she was not free to leave the placement,
- The placement found no evidence during the SAR process that it's own staff had alerted adult social care (ASC) that she met the 'acid test',
- There was no documented evidence of a mental capacity assessment being completed in relation to the implementation of assistive technology,
- A mental capacity assessment was carried out by ASC in June 2021 which deemed that P did not have the capacity to make decisions about these restrictive arrangements,
- P's arrangements were discussed at Legal gateway meetings and categorised as a 'medium priority' to be referred to the CoP for consideration for a Community DoL.

# Priority for the CoP process

- The reasoning for the given priority was that:
  - (i) there was a backlog of cases at that time being handled by the Court of Protection which was resulting in long delays before hearings were being held - a situation exacerbated by the impact of the Covid lockdown and an influx of new applications;
  - (ii) P and her family were happy with the restrictive elements of P's care plan and had raised no objections;
  - (iii) There were ongoing discussions about the possibility of P being moved to a different placement which would mean the whole community DoLS process, and application to the court, having to be repeated.

This decision was kept under monthly review – although it is noted within the SAR process that this could have been more robustly documented.

# What have we implemented internally?

- Monthly MCA forums (internally for Adult Social Care (ASC)) to discuss case examples, case law updates and specific issues relating to MCA and DoLS,
- Community DoL LAS (local authority recording system) process which follows the persons journey from referral to Community DoL order,
- Community DoL toolkit which aids with prioritization of cases being referred to CoP and aids workers to recognise a potential deprivation,
- Monthly legal gateway meetings with legal services to discuss all community DoL cases,
- MCA programme of development which will be rolled out to all ASC roles – currently 2 cohorts have completed with a specific focus on community DoLS,
- Attended sessions with our quality monitoring team to support them to identify where providers may need further support in recognising and responding to potential deprivations of liberty.



# What can you do?

- Ensure that mental capacity assessments are considered for relevant people at the right time and that these are reviewed regularly,
- Ensure that lesser restrictive practice is at the forefront of care planning and delivery,
- Ensure staff teams are able to recognise circumstances which may amount to a deprivation of liberty,
- Familiarise yourselves and staff teams about the acid test and what constitutes a deprivation of liberty and how to respond to this,
- Contact your local DoLS team to discuss cases of concern or for advice and support.

# DoLS at a glance

## Understanding Deprivation of Liberty Safeguards (DoLS)

The DoLS scheme ensures that individuals who may **lack capacity to consent** to their care and/or treatment in care homes or hospitals are

## DoLS explained



### Who DoLS Apply to:

- Adults aged 18 and over
- Individuals with conditions like dementia, brain injury or learning disabilities
- Those living in care homes or hospitals under restrictive arrangements



### How to Recognise a Potential DoLS:

- The Person is not free to leave the care setting
- Continuous supervision and control are in place
- The individual is unable to make decisions regarding their care or treatment due to lack of mental capacity



### Your Role as a Provider

- **Identify** potential deprivation of liberty in care arrangements and request authorisation from the authority
- **Collaborate** closely with local authorities for DoLS authorisation
- **Ensure** continuous supervisory control are in place when needed

DoLS legislation **cannot** be used as a means to limit contact with families or to prevent a person from living with their family or being discharged to the care of their family



### Legal Bodies in relation to DoLS:

- **Managing authorities:** Care homes and hospital settings which are responsible for identifying residents who may be deprived of their liberty and requesting approval
- **Supervisory bodies:** Local authorities and Welsh health boards which are responsible for arranging assessments and granting approvals for deprivation of liberty

### Person's Rights once DoLS are authorised



- Access to an **Independent Mental Capacity Advocate (IMCA)**
  - **39A IMCA:** Supports the best interest assessment when there is no one appropriate to consult
  - **39C IMCA:** Steps in when the current RPR role ends and no appropriate person is available
  - **39D IMCA:** Assists the family in the RPR role
- **Right to challenge an approval** within the Court of Protection, known as Section 21A challenge
- **Right to request a review** to ensure necessity and that conditions are being met,
- Appointment of a **Relevant Person's Representative (RPR)** who advocates on behalf of the person
- **Right to request details** about any conditions attached to the approval as outlined in Form 5 or equivalent documents from the local authority

### What to expect from the DoLS assessments:

- The mental capacity assessment may be undertaken by a best interests assessor or a Section 12 doctor
- The mental health assessment will be completed by a Section 12 doctor
- The maximum authorisation period is 12 months, which will vary depending on the situation
- Conditions may be attached to the approval which will relate to the specific deprivation of liberty



# 6

## Assessments undertaken under DoLS

Age Assessment | Mental Health Assessment | Mental Capacity Assessment | Best Interest Assessment | Eligibility Assessment | No refusals Assessment

See reverse for more information. A Shropshire, Telford & Walsley MCA Multiagency group

# Key Points to consider

- Ensure families are informed when a DoLS is applied for and the rights associated with this,
- Ensure advocacy services are considered where appropriate,
- Be mindful of requesting urgent authorisations if not required,
- Ask for support from other professionals, it benefits everyone to have open working relationships and good communication!

Read the full SAR (Lou) is now fully complete<sup>4</sup> and was published on the TWSP website this week, along with the 7-minute briefing.

This SAR identified learning around:

- the importance of risk assessments
- agencies being clear on roles and responsibilities around assisted technology
- more awareness needed for DoLs criteria

[The report can be found here](#) and the [learning briefing can be found here.](#)



# Safeguarding Adult Review – ‘Lou’ Learning Briefing

**1. Background** - This case review considered the death of a 40 year old person who resided within supported accommodation. They received full-time care due to having disabilities and underlying health conditions including severe epilepsy which was eased with the use of a Vagus Nerve Stimulation (VNS). Sadly, the person passed away suddenly in late 2022.

## 4. Positive and proactive steps taken to address the recommendations so far

- In response to the initial recommendations, partner agencies within the Safeguarding Adults Review (SAR) Panel have taken meaningful and proactive steps to strengthen multi-agency collaboration and enhance safeguarding practice.

- **Strengthening Collaboration in Complex Cases:** Partner agencies are actively working to improve joint planning for individuals with complex needs. There is a shared awareness of Section 42 safeguarding duties, including the importance of timely communication of investigation outcomes.
- **Enhancing Risk Assessment through Shared Knowledge:** Updates to the social care risk assessment process are already underway, with a focus on clearly incorporating information from all relevant agencies. This ensures that risk assessments are comprehensive and person-centred.
- **Improving Care Plans and Quality Assurance:** Reviews of safeguarding assessment and referral forms are progressing to ensure Care Plans accurately reflect individual needs. Quality assurance engagement with care providers is ongoing to uphold and continuously improve the standard of care delivered.
- **Collaborating on Assistive Technology Assurance:** The Assistive Technology Team is partnering more closely with care providers to strengthen oversight and support around assistive technologies, helping ensure continuity of safe and effective care for those who depend on such equipment.
- **Raising Awareness Around Critical Incidents:** A guidance note is being prepared and will be shared with care providers to clarify responsibilities following unexpected deaths and in situations involving police investigations. This will help ensure appropriate actions are taken with sensitivity and professionalism.



## 2. Process

Following receipt of the referral in Winter 2022 scoping information was requested which informed the decision to progress to a Safeguarding Adult Review (SAR) in Spring 2023. Immediate safeguarding actions were implemented and an independent author was sourced in early summer 2023. This review was run alongside a LeDeR review process which avoided duplication of work for agencies and reduced the impact on the family. The review panel was made up of practitioners involved with the case alongside managers from across the partnership and met formally four times throughout the process, with additional theme specific meetings taking place in between. Contact was maintained with the family throughout to update them on the progress and allow opportunity for them to contribute at their own pace.

## 3. Recommendations and Learning

The following recommendations were made following the independent review:

1. Assurance should be sought around procedures reinforcing the need for a single multi agency plan to be developed in complex cases. If single agency reviews have taken place these should be shared with other agencies involved with the person. This should be audited regularly to ensure this is happening.
2. Assurance should be sought that the outcomes and recommendations from Section 42 enquiries are being shared at the earliest opportunity with all relevant organisations, including care providers.
3. Social Care should ensure that all guidance and templates address the issue of suitability of the care plan, taking into account identified risks such as fire or medical emergency.
4. The CQC and Social Care should use the findings of this review for future quality assurance of Home farm trusts provision Telford.
5. The assistive technology team should ensure clarity on roles and responsibilities of provision and maintenance of the equipment in cases where the care providers have their own technical support team, along with ensuring there is a contingency plan in place in case of equipment failure
6. Assurance should be sought that all care providers and community based professionals are aware of the 'acid test' in relation to DoL's criteria and the process to follow for identified cases.
7. Telford and Wrekin Safeguarding Partnership should remind care providers and agencies not to initiate any investigation following a death where there is police involvement.

# Useful Links

- [Understanding when someone is deprived of their liberty | The Law Society](#)
- [Deprivation of Liberty Safeguards \(DoLS\) at a glance – SCIE](#)
- [DoLS in focus: The role of the Managing Authority \(MA\) – Mental Capacity Ltd](#)
- [Mental Capacity Resource Centre | 39 Essex Chambers](#)
- [Edge Films | Edge Training](#)



# **A Different Perspective? -**

Karen Littleford  
(Safeguarding Adults Lead,  
Partners in Care)





## A Different Perspective - Social Work: Practical Guide to Adult Safeguarding



[Watch the video here -](https://www.youtube.com/watch?v=RTZfoe0LCFU)

<https://www.youtube.com/watch?v=RTZfoe0LCFU>



# Ten years of the Care Act 2014

- A real shift from protection and risk to well-being and strengths based, risk enablement practice.
- Law refocused practice and legal literacy focused to enable a rights-based approaches.
- **Co-production** (describes working in partnership by sharing power between people who draw on care and support, carers, families and citizens).

(Research in Practice, 2025)



# Why?

Safeguarding Adults  
and The Care Act 10  
Years On

Why is it useful to look  
at things from a  
different perspective?



# References

- Evans, K.R. (2025) *Social Work: Practical Guide to Adult Safeguarding*. <https://www.youtube.com/watch?v=RTZfoe0LCFU>
- Research in Practice Ten years of the Care Act 2014 Published: 13/01/2025. <https://www.researchinpractice.org.uk/adults/content-pages/podcasts/ten-years-of-the-care-act-2014/>
- Social Care Institute for Excellence (2022) *Co-production: what it is and how to do it*. London: Scie. <https://www.scie.org.uk/co-production/what-how/>



# Webinars, Policy, Guidance, Resources and Reports



[This Photo](#) by Unknown Author is licensed under [CC BY-SA](#)

## Oliver McGowan Mandatory Training on Learning Disability and Autism

The Health and Care Act 2022 introduced a requirement that all CQC registered service providers must ensure their staff have training on learning disability and autism that is appropriate to their role. The Oliver McGowan Mandatory Training on Learning Disability and Autism is still the Government's preferred and recommended training for health and social care staff to undertake. The training is delivered in 2 Tiers; staff need to complete either Tier 1 or Tier 2 and both tiers consist of 2 parts.



Partners in Care is working with [First Response Training](#) to provide Part 2 Tier 1 and Tier 2 training from September.



**Dates and  
booking online**



Care providers must ensure that staff members complete the eLearning module before they attend either the Part 2 Tier 1 or Tier 2 training.



<https://www.partnersincare.org.uk/training-courses/oliver-mcgowan-training>





# MCA Webinar 12 - End of life decision making.

This short webinar will look at some of the common decisions involved in end-of-life care and the opportunities offered by the Mental Capacity Act to make plans to have your voice heard.



- Tuesday 23<sup>rd</sup> September 2025  
11:00am-12:30pm
- £19 per learner (members) £26 (non-member)
- Book here  
<https://www.partnersincare.org.uk/training-courses/mca-dols/mca-and-dols-webinars>



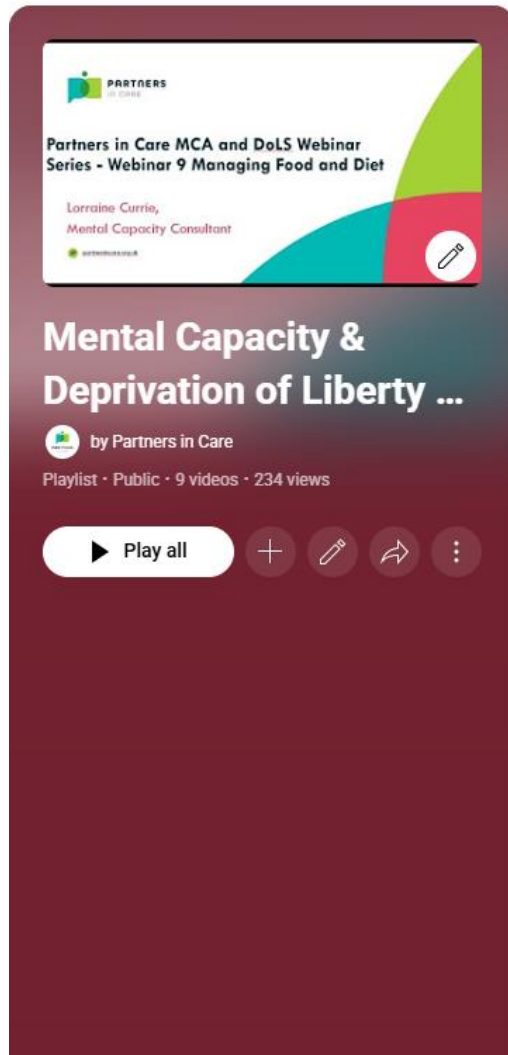
**Partners in Care  
Mental Capacity Webinar  
Series - Webinar 12**

**End of Life Decision Making**

A webinar with  
Lorraine Currie, Independent Mental  
Capacity Consultant

These webinars are an opportunity to upskill around  
the topics of Mental Capacity and the Deprivation of  
Liberty Safeguards

# MCA Webinar Recordings



Sort **All** Videos Shorts

**Partners in Care MCA Webinar 9 – 'Managing Food and Diet'**  
Partners in Care • 81 views • 3 months ago

**Partners in Care MCA Webinar 8 – Restraint in A Care Setting - What is...**  
Partners in Care • 77 views • 5 months ago

**Partners in Care MCA and DoLS Webinar 7 – Mental Capacity, Sex and...**  
Partners in Care • 177 views • 10 months ago

**Policies, Procedures and the Mental Capacity Act, how does it all fit together?**  
Partners in Care • 209 views • 11 months ago

**Partners in Care MCA and DoLS Webinar 5 – Back to Basics, Deprivation of...**  
Partners in Care • 722 views • 1 year ago

**Mental Capacity - Lasting Powers of Attorney and Court Appointed Deputies**

<https://www.youtube.com/playlist?list=PLR7h4BzDDmvRKI8NFFtHQiRe4-HB3hRT1>

# Mental Capacity and Deprivation of Liberty Safeguards Padlet (Partners in Care)



Padlet

Karen Littleford • 6d

## Partners in Care MCA and DoLS Webinar and Newsletter Resources

This Padlet is a Partners in Care resource for members and partner agencies. Scroll down in each section to access the resources. Access to these resources is a benefit of attending the live webinar, being provided access as a member of Partners in Care or a partner agency.

### Newsletters

Karen Littleford 2 months ago

March 2025 MCA and DoLS Newsletter

mailchi.mp

MCA Newsletter March 2025

Karen Littleford 6 months ago

December 2024 MCA and DoLS Newsletter

### PowerPoint Slides

Karen Littleford 2 months ago

March 2025 - Webinar 10 Contact and the MCA

Partners in Care MCA and DoLS Webinar 10 - Contact and the MCA

Lorraine Currie, Mental Capacity Consultant

PDF

Webinar 10 - Contact and the MCA WEB

Karen Littleford 6 months ago

November 2024 - Managing Food and Diet

Partners in Care MCA and DoLS Webinar 9 - Managing Food and Diet

### Previous Webinar Recordings (available to all after 3 months)

Karen Littleford 2 months ago

March 2025 - Webinar 10 Contact and the MCA (to be added June 2025)

Karen Littleford 4 months ago

Partners in Care MCA Webinar 9 - 'Managing Food and Diet'

Lorraine Currie, Mental Capacity Consultant

YouTube

Partners in Care MCA Webinar 9 - 'Managing Food and Diet'

Karen Littleford 4 months ago

Partners in Care MCA

### MCA Webinar Flyers

Karen Littleford 2 months ago

Webinar 12 - End of life decision making (including CPR decision making and Advanced Decisions) and what about assisted dying?

Tuesday 23rd September - 11:00am-12:30pm.

Partners in Care Mental Capacity Webinar Series - Webinar 12

End of life decision making (including CPR decision making and Advanced Decisions) and what about assisted dying?

A webinar with Lorraine Currie, Independent Mental Capacity Consultant

These webinars are an opportunity to spend around the topic of Mental Capacity and the Deprivation of Liberty Safeguards.

PDF

Partners in Care Webinar 12 September 2025 Web

### MCA Tools, Templates and Resources

Karen Littleford 2 months ago

Preparing to carry out an MCA Assessment Tool - June 2025

PREPARING TO COMPLETE A MENTAL CAPACITY ASSESSMENT

A good capacity assessment will be a clear, focused, evidence based, person centred, non-judgmental

1. What? Tools, What do you need for this assessment?

- The MCA requires a person to be assessed for capacity in relation to specific decisions.
- There is no test for capacity, it is a clinical judgement.
- The person must be able to understand the information relevant to the decision.
- The person must be able to use that information to make a decision.
- The person must be able to communicate their decision.

2. Why? Why do you need this assessment?

- To ensure the person's rights are protected.
- To ensure the person's best interests are met.
- To ensure the person's autonomy is respected.
- To ensure the person's dignity is maintained.
- To ensure the person's safety is protected.

3. How? How do you do this assessment?

- Use the MCA assessment tool.
- Ask the person questions about the decision.
- Listen to the person's views and feelings.
- Consider the person's past and present behaviour.
- Consider the person's beliefs and values.
- Consider the person's ability to understand the information.
- Consider the person's ability to use the information.
- Consider the person's ability to communicate their decision.

4. What? What do you need for this assessment?

- A copy of the MCA assessment tool.
- A copy of the person's medical records.
- A copy of the person's social history.
- A copy of the person's legal history.
- A copy of the person's financial history.
- A copy of the person's family history.
- A copy of the person's community history.
- A copy of the person's employment history.
- A copy of the person's education history.
- A copy of the person's leisure history.
- A copy of the person's travel history.
- A copy of the person's immigration history.
- A copy of the person's criminal history.
- A copy of the person's civil history.
- A copy of the person's mental health history.
- A copy of the person's physical health history.
- A copy of the person's substance use history.
- A copy of the person's sexual history.
- A copy of the person's reproductive history.
- A copy of the person's end-of-life history.
- A copy of the person's advance care planning history.
- A copy of the person's decision-making history.
- A copy of the person's consent history.
- A copy of the person's refusal history.
- A copy of the person's withdrawal history.
- A copy of the person's termination history.
- A copy of the person's abortion history.
- A copy of the person's sterilisation history.
- A copy of the person's vasectomy history.
- A copy of the person's hysterectomy history.
- A copy of the person's prostatectomy history.
- A copy of the person's organ donation history.
- A copy of the person's bone marrow donation history.
- A copy of the person's blood donation history.
- A copy of the person's organ transplant history.
- A copy of the person's bone marrow transplant history.
- A copy of the person's blood transfusion history.
- A copy of the person's organ donation history.
- A copy of the person's bone marrow donation history.
- A copy of the person's blood donation history.
- A copy of the person's organ transplant history.
- A copy of the person's bone marrow transplant history.
- A copy of the person's blood transfusion history.

PDF

Preparing for an MCA assessment (LC) v3

Karen Littleford 12 minutes ago

Contact Contract - From Contact & The MCA Webinar to be added

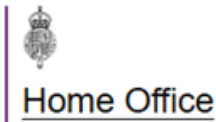
Karen Littleford 2 months ago



<https://padlet.com/klittleford2/partners-in-care-mca-and-dols-webinar-and-newsletter-resourc-e7qspc6fy3mmze8w>



# The Crime and Policing Bill



The Crime and Policing Bill, which was initially introduced on 25 February 2025, is nearing its final approval in parliament. It brings new laws to protect children, women, and adults.

Here's what's changing:

- ✓ A new offence for child criminal exploitation
- ✓ 'Cuckooing' being made a specific offence
- ✓ Mandatory reporting of child sexual abuse for people in certain roles
- ✓ Review of Regulated Activity (DBS checks) for supervised roles
- ✓ New offences for stalking, spiking, and taking intimate images
- ✓ AI tools made to create child abuse images are now banned
- ✓ Police can now search digital devices at the border for abuse material
- ✓ Retail workers are now protected by law
- ✓ Knife crime laws are tougher
- ✓ Police get more powers to act on antisocial behaviour and drugs

We all need to understand what's in this bill. read more in the Crime and Policing Bill: overarching factsheet, Updated 21 July 2025

<https://www.gov.uk/government/publications/crime-and-policing-bill-2025-factsheets/crime-and-policing-bill-overarching-factsheet>

# University of Leeds - Cuckooing: Know the Signs Posters

'Know the Signs' posters for Medical Professionals, NHS Community Staff; Opticians and Audiologists, Fire and Rescue; Housing Officers, Utility Meter Readers; Housing Maintenance Staff.

**CUCKOOING**  
is when criminals take over a vulnerable person's home and use it:

- To deal, store or take drugs
- To hide weapons or stolen goods
- For sexual or financial exploitation
- As a place to stay

**Know the signs**

Gardens are overgrown  
Locks on internal doors  
Unopened mail  
Piles of takeaway boxes or containers  
Secure doors are propped open  
Damage to doors or windows  
Several cars, bikes, or mopeds are parked outside of the property  
Children or adults that have no clear connection to the tenant  
Curtains and blinds are closed during the day

**the tenant may:**

- Present as angry, anxious, fearful or withdrawn
- Regularly report that they have lost their door keys or access fobs
- Be carrying multiple mobile phones
- Avoid eye contact

**CUCKOOING**  
is when criminals take over a vulnerable person's home and use it:

- To deal, store or take drugs
- To hide weapons or stolen goods
- For sexual or financial exploitation
- As a place to stay

**Know the signs**

Not attending medical appointments  
Frequent claims of lost medication  
Not collecting prescriptions  
Efforts to contact the patient are unsuccessful  
Sexually transmitted infections or unwanted pregnancies  
Self-neglect (e.g. unclean clothing)  
People with no known connection to the patient have accompanied them to appointments  
Refusal of at-home appointments or referral to NHS community health services

**The patient may:**

- Present as angry, anxious, fearful or withdrawn
- Provide accounts of how injuries have occurred which seem rehearsed
- Be reluctant to return home after a stay in hospital
- Be carrying multiple mobile phones

If you suspect a property is being cuckooed call **101** in an emergency call **999**. To report information anonymously call Crimestoppers on **0800 555 111** or use the QR code to report online

**CUCKOOING**  
RESEARCH & PREVENTION NETWORK



If you suspect a property is being cuckooed call **101** in an emergency call **999**. To report information anonymously call Crimestoppers on **0800 555 111** or use the QR code to report online

**CUCKOOING**  
RESEARCH & PREVENTION NETWORK

<https://essl.leeds.ac.uk/downloads/download/262/cuckooing-know-the-signs-posters>

# Save the Date - Safeguarding Adults Week 17 - 21 November 2025



The programme is [ready](#)! We have confirmed guest speakers talking about modern slavery, adult exploitation, alcohol and drug services in Shropshire and Telford, a face to face drop in in Telford Town Centre and finally a session on prevention.

This years resources and webinar recording will be accessed on Padlet [here](#).

You can watch the events from Shropshire and Telford and Wrekin in 2024 on the Partners in Care YouTube channel [here](#)



**PARTNERS**  
in CARE



Telford and Wrekin

**Safeguarding**  
PARTNERSHIP



Shropshire Safeguarding  
Community Partnership

# Adult Safeguarding – Prevention (free)



## Webinar outline:

Explain how a "Speak Up" culture acts to prevent abuse



Outline how respect and active listening contributes to good Safeguarding practice

Illustrate how taking a Making Safeguarding Person approach contributes to prevention

Identify the role of empowerment, education, and support in prevention

Describe how a positive safeguarding culture contributes to the prevention of abuse

Book [here](#) on the Partners in Care website

# Partners in Care YouTube Channel -



## Playlists

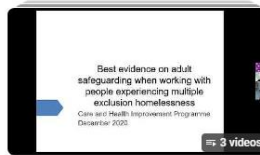
A-Z ▾



**Adult Safeguarding**  
Real Safeguarding Stories · Playlist  
[View full playlist](#)



**Adult Safeguarding**  
Public · Playlist  
[View full playlist](#)



**Adult Safeguarding and Homelessness**  
Public · Playlist  
[View full playlist](#)



**Adults who Self-Neglect or Hoard**  
Public · Playlist  
[View full playlist](#)



**Advocacy**  
Public · Playlist  
[View full playlist](#)



**County Lines and Cuckooing/Home Takeover**  
Public · Playlist  
[View full playlist](#)



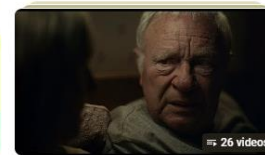
**CQC Out of Sight report one year on Response Event by CoProduce Care**  
Public · Playlist  
[View full playlist](#)



**Cyber Crime**  
Public · Playlist  
[View full playlist](#)



**Data Security Protection Toolkit (DSPT)**  
Unlisted · Playlist  
[View full playlist](#)



**Dementia**  
Public · Playlist  
[View full playlist](#)



**LGBTQ+ abuse in care homes revealed**  
Public · Playlist  
[View full playlist](#)



**DBS and You**  
Public · Playlist  
[View full playlist](#)



**It happens to us too**  
Public · Playlist  
[View full playlist](#)



**LGBTQ+ abuse in care homes revealed**  
Public · Playlist  
[View full playlist](#)



**LGBTQ+ abuse in care homes revealed**  
Public · Playlist  
[View full playlist](#)

Domestic Abuse: It Happens To Us Too' animation BSL version Domestic Abuse Playlist) [here](#)

Playlists menu <https://www.youtube.com/@partnersincare8598/playlists>





## International Day of Older People

### International Day of Older People on 1 October

Join the UK Network of Age-friendly Communities in celebrating the power that social connections have in shaping our lives and communities, this International Day of Older People on 1 October. This years' theme is Building Belonging: Celebrating the power of our social connections.

Building Belonging: Celebrating the power of our social connections <https://www.agewithoutlimits.org/image-library/collection?id=5198&page=1>

Find out more here on the Centre for Ageing Better website - <https://ageing-better.org.uk/international-day-older-people-1-october-2025>





**NIHR** | School for Social  
Care Research

Opening the “too difficult box”:  
**Strengthening adult safeguarding  
responses to homelessness and  
self-neglect**



The average age at death for people experiencing homelessness is **43.2 years for women** and **45.4 years for men**. With such high risks of mortality, it is important that statutory services across England work effectively to safeguard individuals experiencing extreme forms of homelessness. **This study focuses on adult safeguarding responses for people who are experiencing ‘multiple exclusion homelessness’ (MEH), a term used to capture overlapping experiences associated with profound social exclusion, including not just homelessness but also institutional care, mental ill health, substance use, and ‘street culture’ activities. One of the risks of MEH is ‘self-neglect’ (severely neglecting one’s health, nutrition and hygiene).**

Harris, J., Martineau, S., Cornes, M., Manthorpe, J., Tinelli, M., Ornelas, B. and Burrridge, S. (2025) Opening the “too difficult box”: Strengthening adult safeguarding responses to homelessness and self-neglect. London: NIHR Policy Research Unit in Health and Social Care Workforce Policy Institute, King’s College London. Open access here - <https://kclpure.kcl.ac.uk/portal/en/publications/opening-the-too-difficult-box-strengthening-adult-safeguarding-re>



 01743 860011

 [info@partnersincare.org.uk](mailto:info@partnersincare.org.uk)

 [partnersincare.org.uk](http://partnersincare.org.uk)

Partners in Care (Shropshire, Telford and Wrekin)

Registered in England & Wales No: 04660475.

Registered address: 6 The Farriers, Annscroft, Shrewsbury, Shropshire SY5 8AN