



**Integrated  
Care System**  
Shropshire, Telford and Wrekin

**NHS**

**Shropshire, Telford  
and Wrekin**

August 2022

# Care Cascade

Welcome to your monthly care provider update



## Welcome Back

We are pleased to reintroduce our monthly updates for colleagues working in the care sector.

These editions will centre around giving teams the information and resources they need relating to winter planning, with a particular focus on Covid-19 - including vaccinations, as well as flu vaccinations.

If you would like to include anything in the next edition, please email [scott.demmerling@nhs.net](mailto:scott.demmerling@nhs.net)



## Vaccination update

The NHS in Shropshire, Telford and Wrekin is busy planning for the forthcoming Autumn Booster rollout, which is scheduled to launch next month. The life-saving booster jab will be available from September for those people who are most at risk from Covid-19.

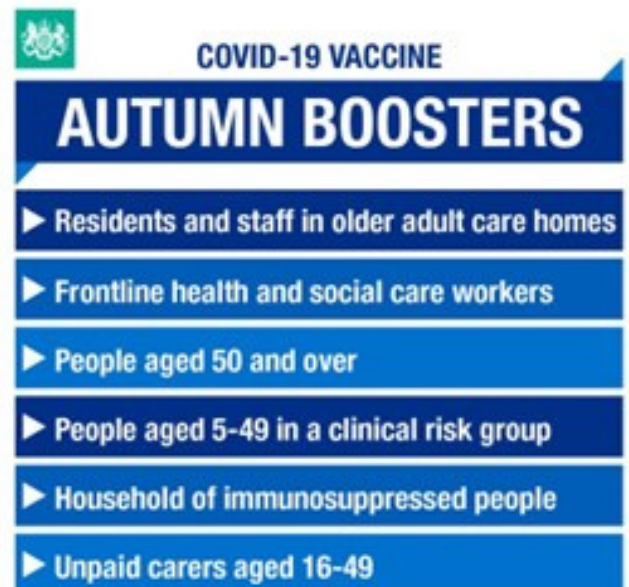
The Autumn Booster jab will be offered to everyone aged 50 and over as well as those who are at highest risk from serious illness such as pregnant women and people with long-term health conditions as well as frontline health and social care workers.

As with previous vaccination phases, the oldest and most vulnerable will be called forward first, with people able to book in online or through 119, as long as it has been three months since their last dose.

**With a plan to start vaccinating people in care homes from 5 September, the Autumn Booster campaign, will then begin to offer vaccinations to people aged 75 and over in line with the JCVI guidance, before opening the offer up to the remaining eligible groups.**

The NHS will invite eligible people when it's time to come forward. Please wait to be contacted. To find out more about the autumn booster click [here](#).

Flu vaccines will also be available to everyone aged over 50 from September – ensuring protection against two dangerous diseases as we head towards the autumn and winter. These will be available for eligible people to book via their GPs or community pharmacy. Some eligible individuals may be offered the flu and covid jab at the same time.





## Infection Prevention and Control

The guidance for testing and infection prevention control measures in adult social care settings have been updated with the changes due to go live on 31st August 2022.

Please see links for the full guidance.

[COVID-19 testing in adult social care - GOV.UK \(www.gov.uk\)](https://www.gov.uk/guidance/covid-19-testing-in-adult-social-care)

[COVID-19 supplement to the infection prevention and control resource for adult social care - GOV.UK \(www.gov.uk\)](https://www.gov.uk/guidance/covid-19-supplement-to-the-infection-prevention-and-control-resource-for-adult-social-care)

The main changes to the guidance include:

- From 31st August 2022 routine asymptomatic lateral flow testing for staff will no longer be required.
- Asymptomatic testing should only be carried out as part of rapid testing as a response to outbreak management.
- Lateral flow testing should still take place for staff and residents who are displaying any symptoms of Covid-19.
- Admissions to care homes from a hospital setting should still be tested 48 hours prior to discharge from hospital with a PCR test, or lateral flow test if they have tested positive in the last 90 days.
- Admissions from a community setting should still undertake testing 72 hours prior to admission to a care setting.

Please ensure that you continue to report any cases to your local health protection team.

Shropshire: [shropshirepublichealth@shropshire.gov.uk](mailto:shropshirepublichealth@shropshire.gov.uk) or 01743 251234

Telford and Wrekin: [healthprotectionhub@telford.gov.uk](mailto:healthprotectionhub@telford.gov.uk)

## Cost of living

- Following the increased cost of living and running costs we wanted to share this link which may be of use to you.

<https://www.nationalcareforum.org.uk/projects/free-government-funded-website-and-energy-efficiency-tool-for-care-homes/>







## National Capacity Tracker

A big thank you to the care providers for updating the National Capacity Tracker, putting our region 3rd top in the country for updates which is brilliant and hopefully helps reduce phone calls to them, enabling them to focus on caring.

## iPad closedown

In winter 2020, the NHS Transformation Directorate (formerly NHSX) delivered 11,000 iPads to care homes across England that had restricted access to specific technology. This was to support video calls when Covid-19 safety concerns meant care home residents were unable to see family members and friends in person.

On 30 June 2022, centrally funded support for Mobile Device Management software on the iPads ended. Between 1st and 11th July 2022, the iPads were issued with daily commands to reset to factory settings. Data on the iPad will have been deleted and the iPad will behave as if brand new out of the box. Homes who had taken action prior to the 30th of June 2022 had the opportunity to create a new Apple ID and back up their data to the cloud, enabling them to retain photos and documents.

There are still a number of devices that have not accepted the reset command, and for these devices they will no longer operate until action is taken. The 'Resetting your iPad FAQ' document explains how the iPads can be placed into recovery mode and reset to factory settings. With the MDM removed from the devices, this can no longer be done remotely, and will need actioning by the care home. The iPad will need to be connected to a computer using the cable provided and a reset completed.

<https://www.digitalsocialcare.co.uk/resource/nhs-ipad-closedown-faq-july-2022/>

## What Good Looks Like for Adult Social Care

You may be familiar with the What Good Looks Like framework that was launched in September 2021 to support Integrated Care Systems (ICS) and NHS providers to plan and deliver the digital transformation, data and technology imperatives needed to deliver their long-term system objectives. We are now looking at how this framework might be adapted for the adult social care sector and are keen to work with care providers to help us with this work.

Do you know any care providers that might be interested in being part of this discussion? If you do, please ask them to contact Henry Oshigbosin at the following email address [Henry.Oshigbosin-associate@masonadvisory.com](mailto:Henry.Oshigbosin-associate@masonadvisory.com) for more information.

<https://transform.england.nhs.uk/digitise-connect-transform/what-good-looks-like/what-good-looks-like-publication/>









## Deadline for print materials

Deadline to order print materials for Health and Social Care Workers Winter Vaccinations activity is approaching.

The final deadline for ordering print materials for this year's activity is 31 August. Delivery is due in September.

Print materials including stickers, posters, a DL leaflet and A5 Q&A are available to order. You can place orders for delivery [here](#).

Digital versions of these assets will be available for download in mid-September.

 <p>CARE: Home Care Worker A4... <a href="#">Health and Social Care Workers Winter</a></p> <p>Download, Add to Cart, Favorite icons</p>	 <p>CARE: Home Care Worker A4... <a href="#">Health and Social Care Workers Winter</a></p> <p>Download, Add to Cart, Favorite icons</p>	 <p>CARE: Care Home Worker A4... <a href="#">Health and Social Care Workers Winter</a></p> <p>Download, Add to Cart, Favorite icons</p>
 <p>CARE: Care Home Worker A4...</p>	 <p>CARE: Pharmacist in Care Home...</p>	 <p>CARE: Pharmacist in Care Home...</p>

